



MIRAB INDUSTRIAL VALVES

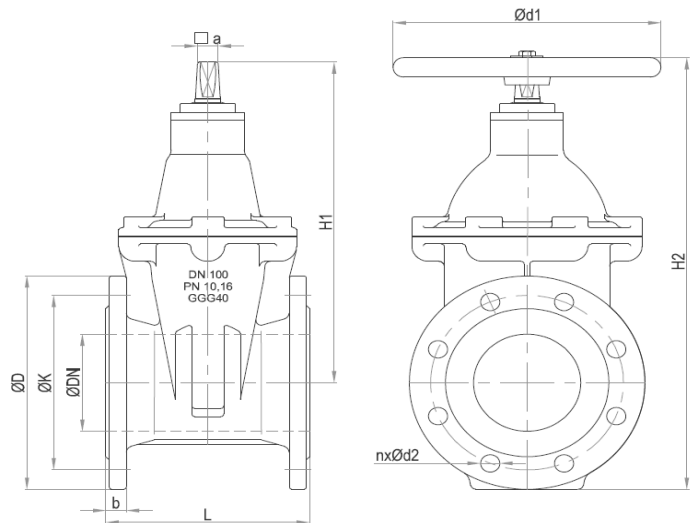
No.: GSF-50-500-10

Soft Sealing Gate Valve Data Sheet

Rev.: 00 , Date: Jan 2023

| | | | |
|----------------------------|---|-------------------------|--|
| Valve Type | Gate Valve | Hydrostatic Test | Acc. to DIN EN 12266-1/ API Std. 598/ ISO 5208 Body Test: @ 1.5*PN, Seat Test @ 1.1*PN |
| Valve Features | Soft Sealing (Resilient seated) Bi-Directional Sealing Tight Shut-Off Closure K Parameter Acc. to mirab catalogue Inside Screw Non-Rising Stem and Handwheel | Coating System | Electrostatic Epoxy Powder, RAL 5005 Min DFT 250 micron (Food Grade) |
| End Connection type | Flanged, RF | Actuator | Handwheel Material St37-2 or Ductile Iron , Epoxy Coated With 0-90° Indicator Closed Clockwise Rotation |
| Connection Standard | DIN EN 1092-2 (DIN 2501) PN10 | | |
| Valve Size Range | DN 50 ~ DN 500 (NPS 2 ~ NPS 20) | | |
| Body Rating | PN10 | | |
| Temperature Rating | Up to 70 °C | | |
| Design Std. | DIN EN 3352- Part 4 | | |
| Face to Face Std. | DIN EN 558-1 Series 14 (DIN 3202-F4) | | |
| Body & Bonnet | Ductile Iron DIN EN 1563 GJS-400-15 (GGG40) | | |
| Wedge | Ductile Iron GJS-400-15 Fully Covered with EPDM | | |
| Body seat | Ductile Iron DIN EN 1563 GJS-400-15 (GGG40) | | |
| Wedge Seat | EPDM Rubber | | |
| Stem | Stainless Steel ASTM A276 Type 420 (1.4021) | | |
| Shaft Sealing | O-Ring (NBR) | | |

Dimension:



| ØDN mm | PN bar | ∓L mm | ∓ØD mm | ∓ØK mm | ∓n | ∓Ød2 mm | ∓b mm | H1 mm | H2 mm | a mm | Ød1 mm | Weight Kg |
|-----------|-----------|----------|-----------|------------|---------|------------|--------------|----------|----------|---------|-----------|--------------|
| 50 | 10 / 16 | 150 | 165 | 125 | 4 | 19 | 19 | 176 | 263 | 11 | 180 | 9 |
| 65 | 10 / 16 | 170 | 185 | 145 | 4 | 19 | 19 | 200 | 297 | 11 | 200 | 12 |
| 80 | 10 / 16 | 180 | 200 | 160 | 8 | 19 | 19 | 237 | 340 | 14 | 200 | 15 |
| 100 | 10 / 16 | 190 | 220 | 180 | 8 | 19 | 19 | 270 | 383 | 14 | 240 | 19 |
| 125 | 10 / 16 | 200 | 250 | 210 | 8 | 19 | 19 | 306 | 434 | 14 | 240 | 26 |
| 150 | 10 / 16 | 210 | 285 | 240 | 8 | 23 | 19 | 365 | 511 | 17 | 360 | 36 |
| 200 | 10 16 | 230 | 340 | 295 | 8 12 | 23 | 20 | 450 | 625 | 19 | 360 | 57 |
| 250 | 10 16 | 250 | 400 | 350 355 | 12 | 23 28 | 22 | 651 | 859 | 27 | 500 | 108 |
| 300 | 10 16 | 270 | 455 | 400 410 | 12 | 23 28 | 24.5 | 723 | 956 | 27 | 500 | 156 |
| 350 | 10 16 | 290 | 505 | 460 520 | 16 | 23 28 | 24.5 26.5 | 815 | 1073 | 27 | 600 | 223 |
| 400 | 10 16 | 310 | 565 | 515 580 | 16 | 28 31 | 24.5 28 | 893 | 1180 | 27 | 500 | 275 |